



Designed to Perform

ABOUT US

INNOVATION is a Saudi-born multidisciplinary firm reshaping the future of smart environments. What began as a leading provider of SCADA systems and automation solutions has evolved into a holistic design and engineering powerhouse.

With a team of certified engineers, architects, and technical specialists, we approach every project with precision, creativity, and local insight. Whether you're building a high-tech villa, an industrial hub, or a hospitality space, we are your one partner from concept to execution.

OUR SERVICES

We offer a complete ecosystem:

- Industrial Automation & SCADA for efficiency and control
- Smart Home & Commercial Systems for comfort and intelligence
- QR-Based Tracking Solutions for streamlined management
- Interior Architecture for spaces that are not only smart, but stunning!



MISSION

We deliver intelligent environments by integrating automation, smart systems, and interior architecture into seamless, future-ready solutions.

VISION

To be the region's top 360° partner for smart, well designed environments,blending technology, architecture, and local expertise.

PROMISE

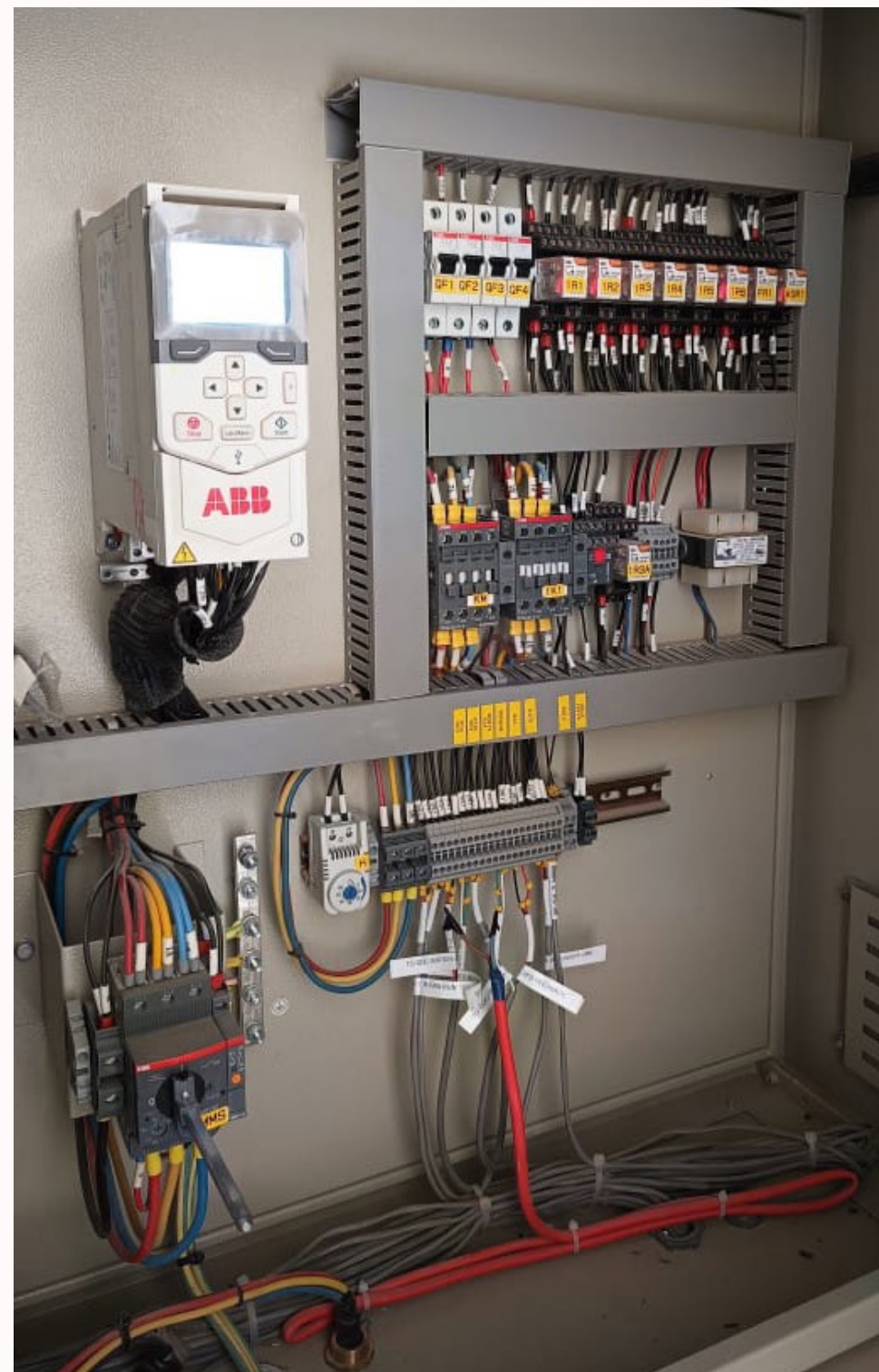
End-to-end solutions that think, feel, and perform, crafted with precision, powered by innovation, and built for lasting impact.

OUR WORK

INTELLIGENT SYSTEMS & AUTOMATION

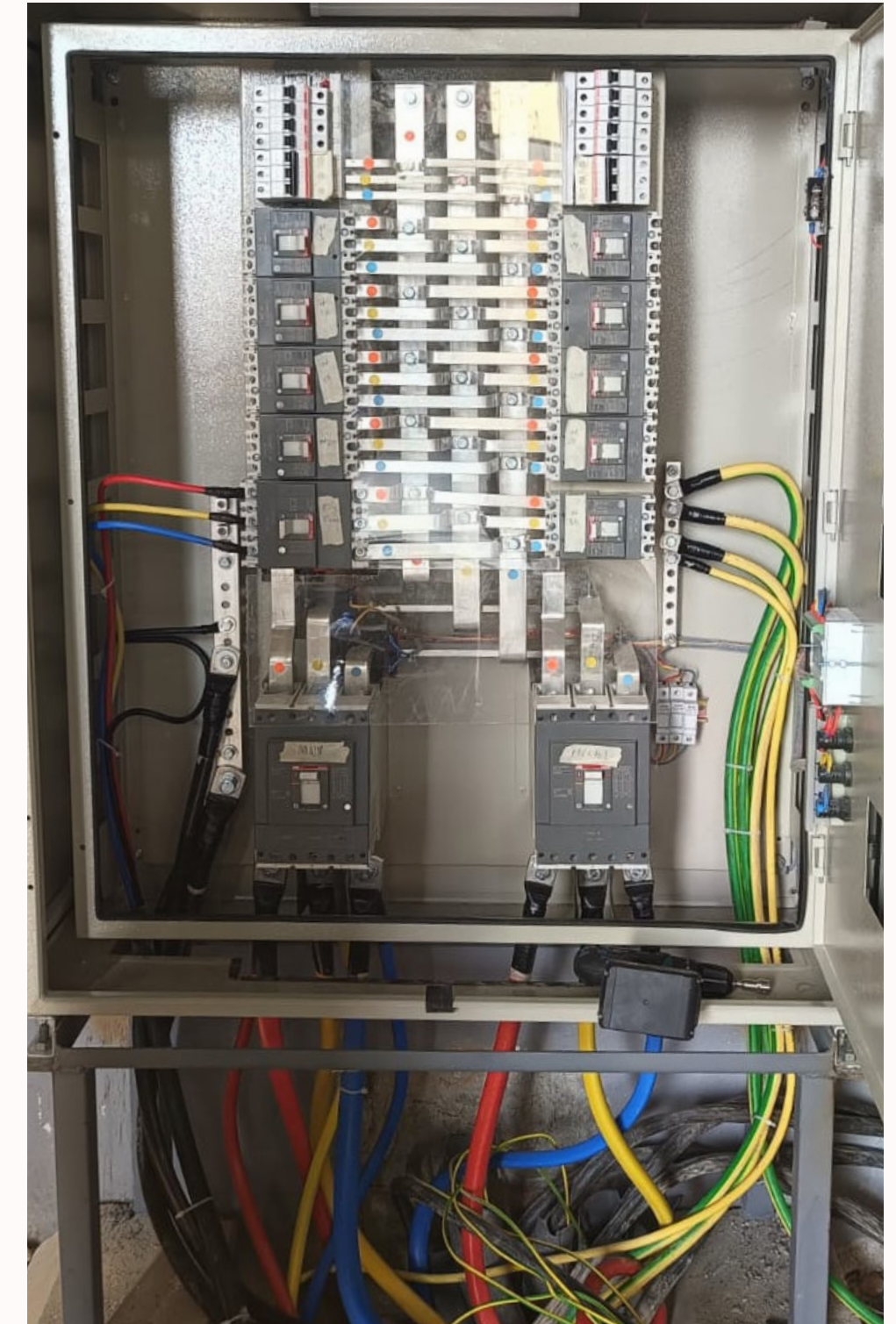
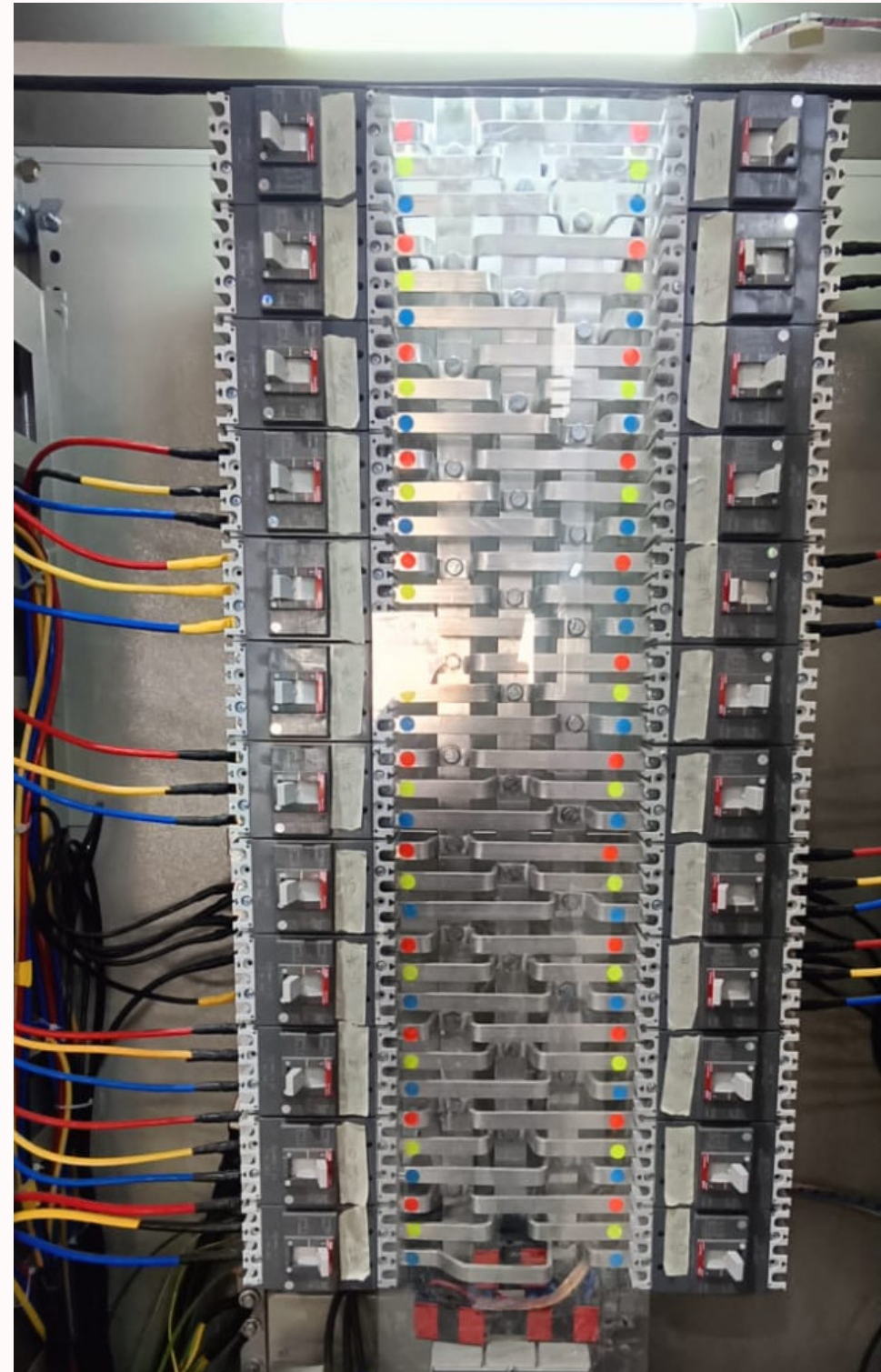
Al-Khair Factory - Jeddah, Saudi Arabia

For the Al-Khair project, we implemented a fully integrated smart system infrastructure tailored to industrial coffee production and facility management. The SCADA system was deployed to control the entire workflow — from charging and blinding to roasting, grinding, and storing green coffee beans — ensuring precise automation up to the packaging phase. A SCADA-based real-time reporting module was also integrated to monitor and log each process stage. To ensure uninterrupted operations, we installed an ATS system for main power changeover with backup generator support. Infrastructure works included cable tray installations for organized wiring. Additionally, a comprehensive BMS (Building Management System) was implemented to regulate air conditioning, lighting, and electrical devices, significantly reducing overall energy consumption. For safety and operational access, the project included QR-based digital systems for Work Permits and Visitor Control, enhancing both efficiency and site security.



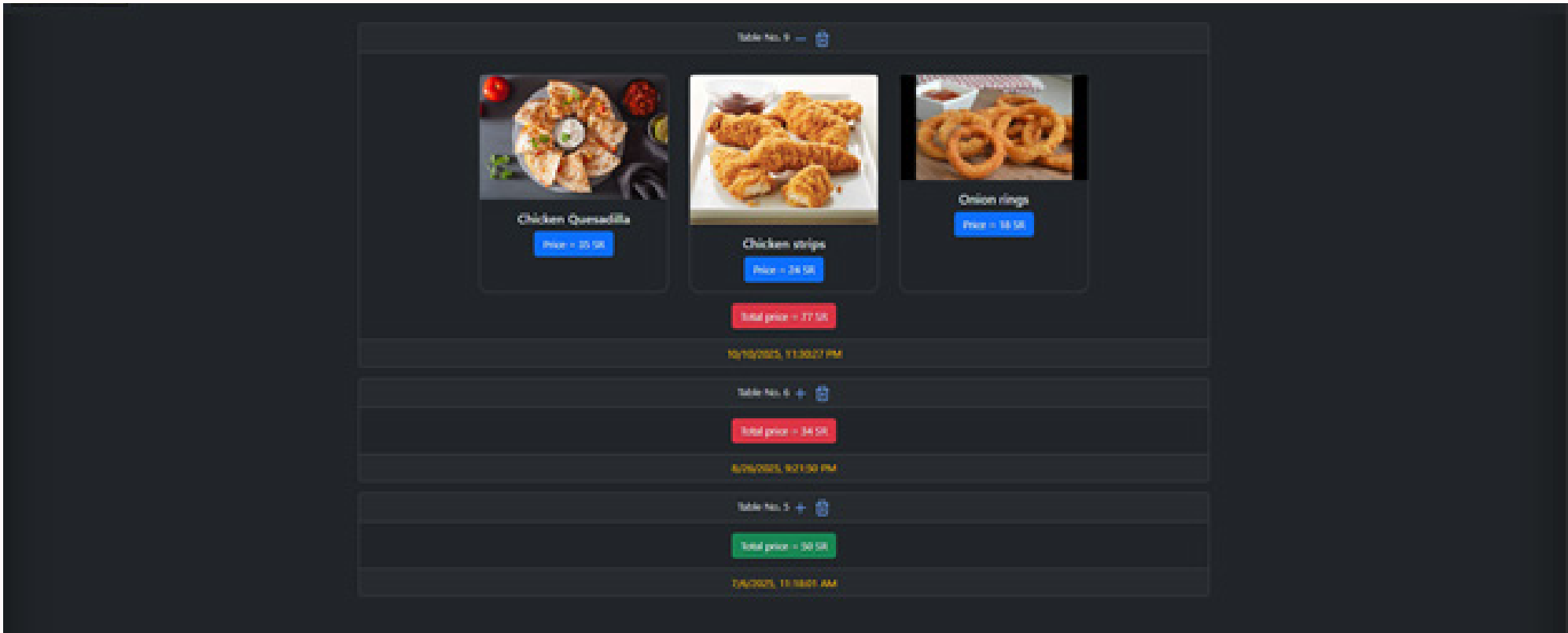
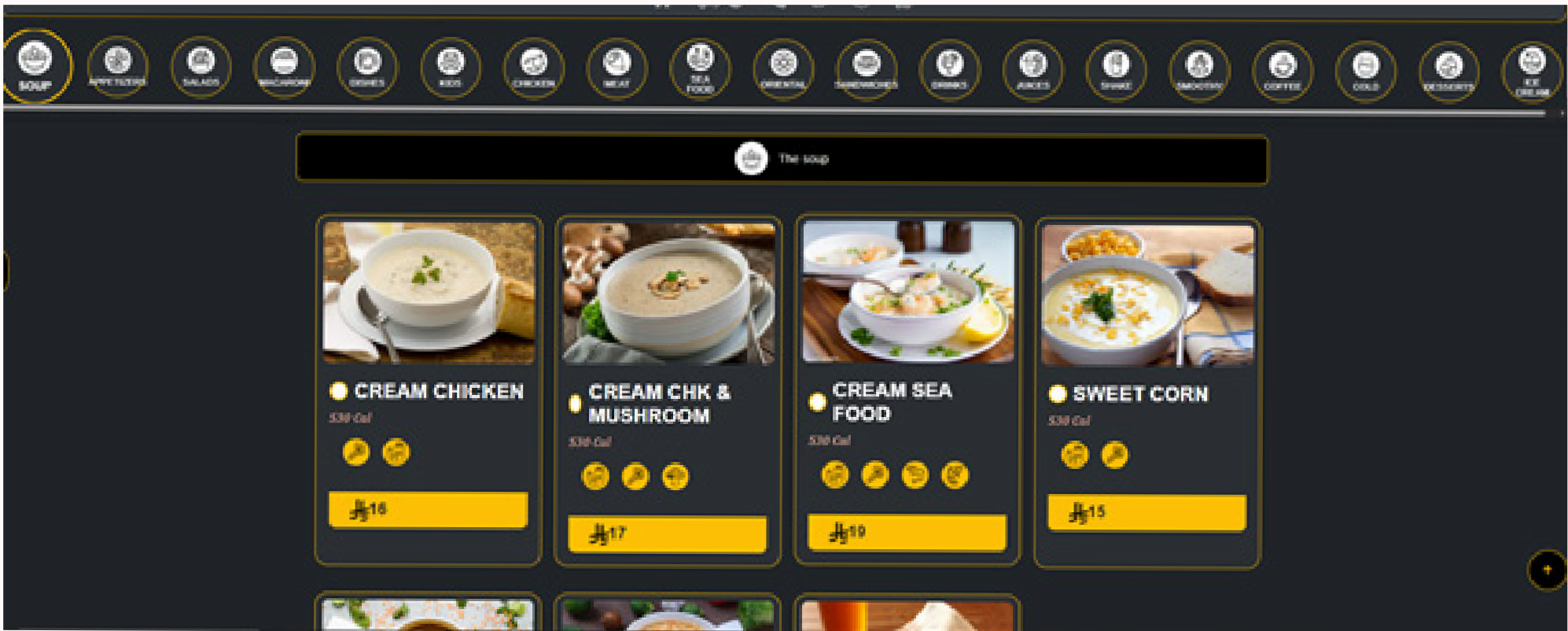
Anbal Factory - Riyadh, Saudi Arabia

For the Anpal Factory project, our scope included the installation of heavy-duty power cables to support the high-load requirements of advanced fabrication machinery. Additionally, we executed full electrical works for the administration building, integrating both standard and low-current systems — including a comprehensive CCTV network, access control units, and structured networking infrastructure — to ensure seamless operational efficiency and secure facility management.



Atyaf Home Food - Sharma, Saudi Arabia

For ATYAF Home Food, we developed a custom QR-based restaurant application designed to enhance the customer experience and streamline operations. The system allows users to easily browse digital menus, locate branches, place orders, and access services – all through a seamless interface. Integrated features also include cashier interaction and backend service management, providing both convenience for customers and operational efficiency for staff.



Bureida Trading & Refrigeration - Riyadh, Saudi Arabia

For Bureida Trading & Refrigeration, we designed and implemented specialized control panels tailored for large-scale industrial refrigeration units. The system ensures precise temperature regulation, operational safety, and reliable performance, supporting the client's high-capacity cold storage and trading operations with intelligent control infrastructure.



Memar - Guest Room Management System (GRMS)

To elevate the guest experience and operational efficiency, our team implemented a state-of-the-art GRMS system at Rosaly Hotel. This smart solution enables seamless control over room functions such as lighting, air conditioning, curtains, and service requests, providing guests with convenience and staff with real-time system feedback and alerts.



Hilton Riyadh Olaya - Riyadh, Saudi Arabia

Power & Emergency Systems Integration

Our scope in the Hilton project focused on ensuring uninterrupted operations and safety compliance through the deployment of critical electrical systems. This included a fully integrated emergency lighting system, UPS (Uninterruptible Power Supply) systems on each floor, and a waterproof power system tailored specifically for the kitchen areas, ensuring both safety and efficiency in high-moisture environments.

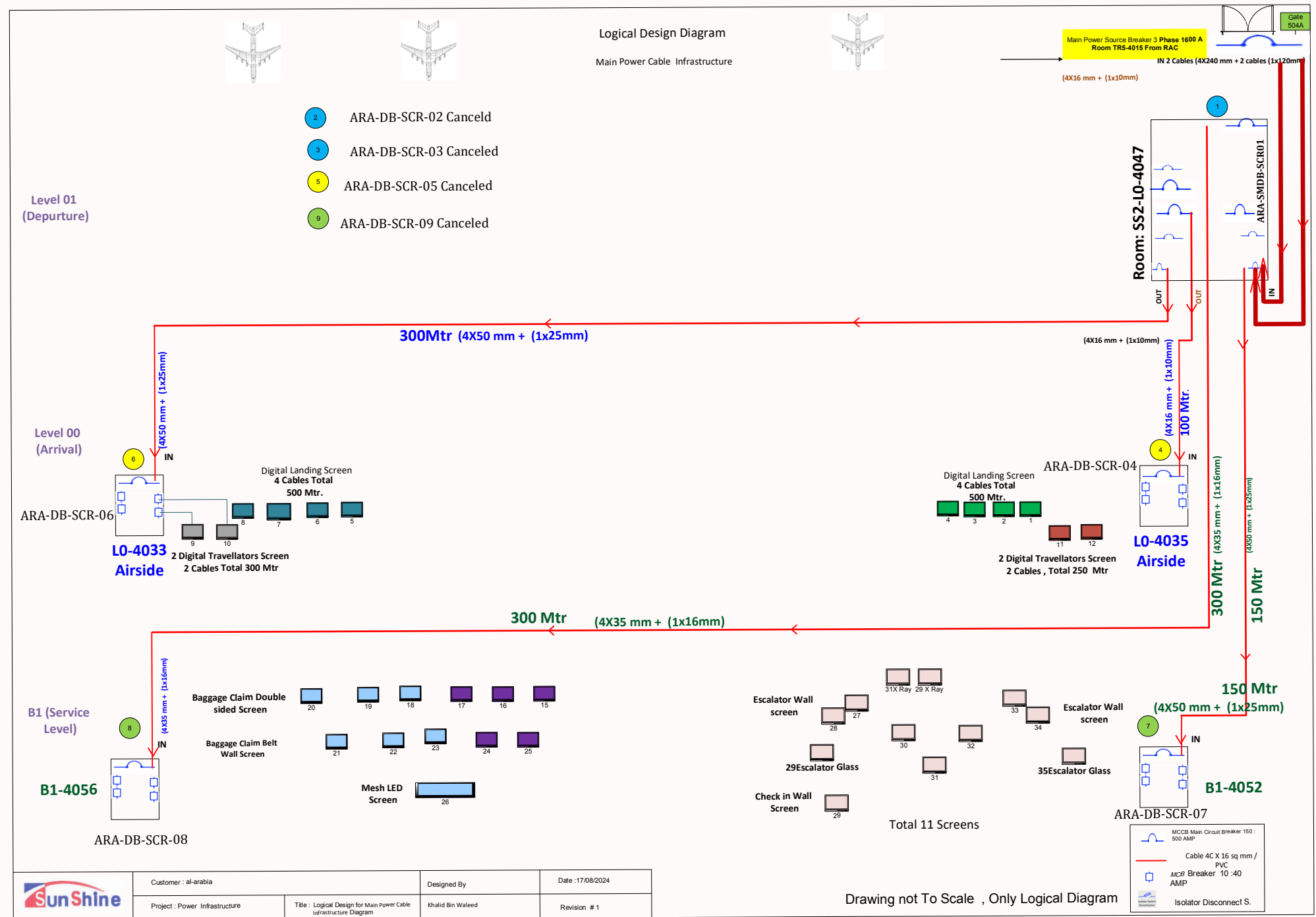


King Khalid International Airport, Terminal 5 - Riyadh, Saudi Arabia

Power & Emergency Systems Integration

Power System Design for Display & Announcements

We were entrusted with the design and integration of a dedicated power system to support information and announcement monitors within Terminal 5. This work was carried out in collaboration with a sub-contractor executing key infrastructure upgrades inside the airport. The solution ensured reliable, continuous operation of digital signage critical to passenger flow and experience.



Obekan Investment Group - Riyadh, Saudi Arabia

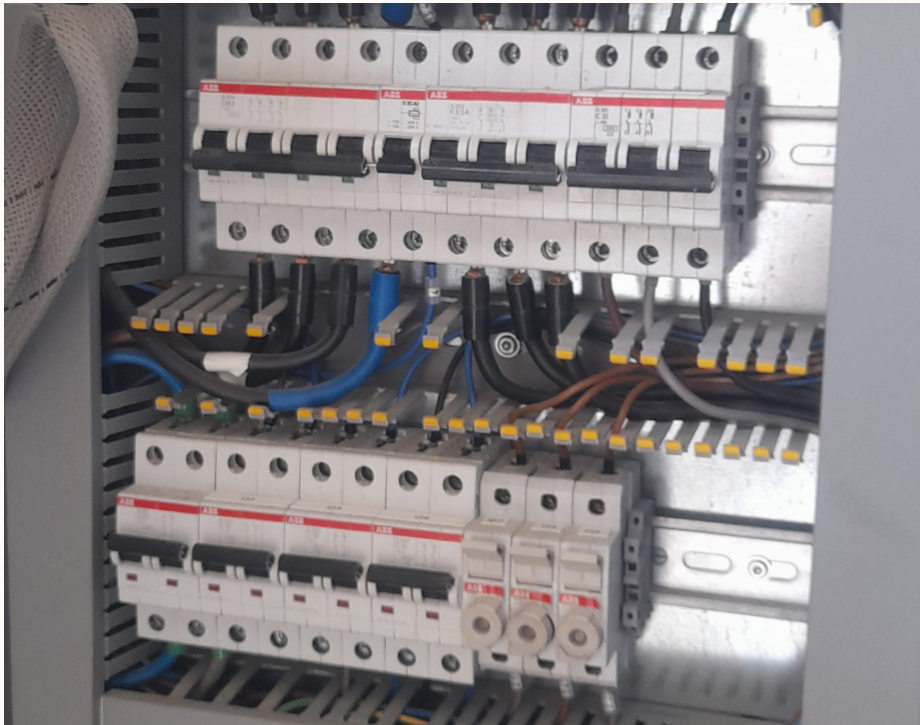
The Obekan project involved the implementation of smart systems across a luxury villa and a large farm. Our scope included a full lighting system for the farm, a smart automation system for the villa, wireless CCTV surveillance across the farm, and a Gen-set power backup system to ensure reliability. The project was designed to enhance energy efficiency, security, and user comfort through integrated technology solutions.



Sustainable - Rabigh, Saudi Arabia

Control Systems for Waste & Water Technology

We engineered and deployed a classic control system to govern waste burner operations, ensuring safe, efficient combustion and process stability. Complementing this, we integrated a SCADA system tailored for advanced Sci-Fi Irish water technology, delivering real-time monitoring, remote control, and detailed analytics to optimize water processing workflows.



INTERIOR ARCHITECTURE & SPATIAL DESIGN

Residential Apartment, Madinaty - Egypt

This apartment is designed and executed in a contemporary style that embodies modern elegance and luxurious comfort. The design concept focuses on clean lines, open spaces, and a sophisticated color palette that balances warmth and refinement.

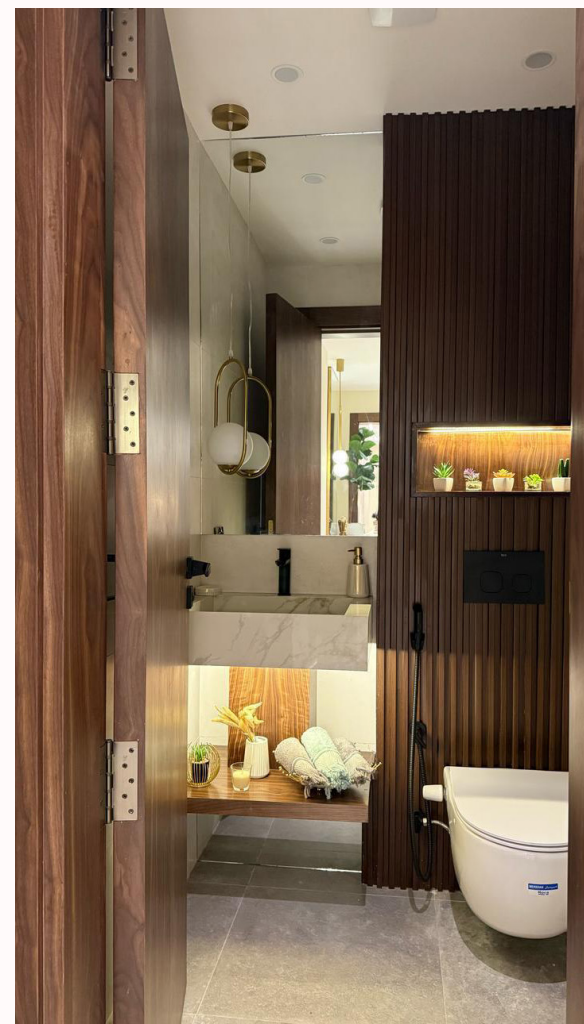
High-quality materials such as marble, natural wood, and brushed metal accents are used throughout the space to create a sense of understated opulence. Custom-designed furniture, ambient lighting, and refined décor elements enhance the modern aesthetic while maintaining functionality and comfort.

The layout promotes spatial harmony and natural light flow, with carefully selected finishes and textures that elevate the overall ambiance. From the sleek kitchen and elegant living area to the serene bedrooms and spa-inspired bathrooms, every detail reflects a commitment to timeless contemporary luxury.









Residential Apartment, Dakar - Senegal





Residential Apartment, Dubai - United Arab Emirates









Residential Apartment, October City - Egypt

This apartment is designed and executed in an exquisite Neo-Classical style, blending timeless elegance with a luxurious modern touch. The design concept celebrates symmetry, grandeur, and refined detailing, creating an atmosphere of sophistication and comfort.

Rich materials such as marble, fine wood, gilded accents, and crystal chandeliers highlight the classic character of the space. Intricate moldings, decorative wall panels, and coffered ceilings add depth and artistic craftsmanship, while a neutral color palette enhanced with gold and soft pastel tones brings warmth and harmony.

Each space — from the majestic living area to the serene bedrooms — is thoughtfully designed to reflect a sense of royal luxury and timeless beauty. The combination of classical proportions and modern functionality results in a residence that is both opulent and gracefully livable, showcasing the perfect balance between tradition and contemporary







THANK YOU